



JCDecaux

Erskineville- Sydney Park Rd Super8 monopole digital screen

Project No. TBA

Methodology of Works

Revision	Originator	Approved	Date	Comments
0			24/07/2023	Issued for Review

Geelong (Head Office)

85 Heales Rd
Corio, VIC 3214
P: 03 5278 6622
F: 03 5278 6655

Sydney

22 Clevedon St
Botany, NSW 2019
P: 02 9316 5509
F: 02 9695 7437

www.hanlonindustries.com.au E: admin@hanlonindustries.com.au ABN: 86 847 145 947

Template Issued 07/06/2017



Doc No HQMS 7.2.3.22

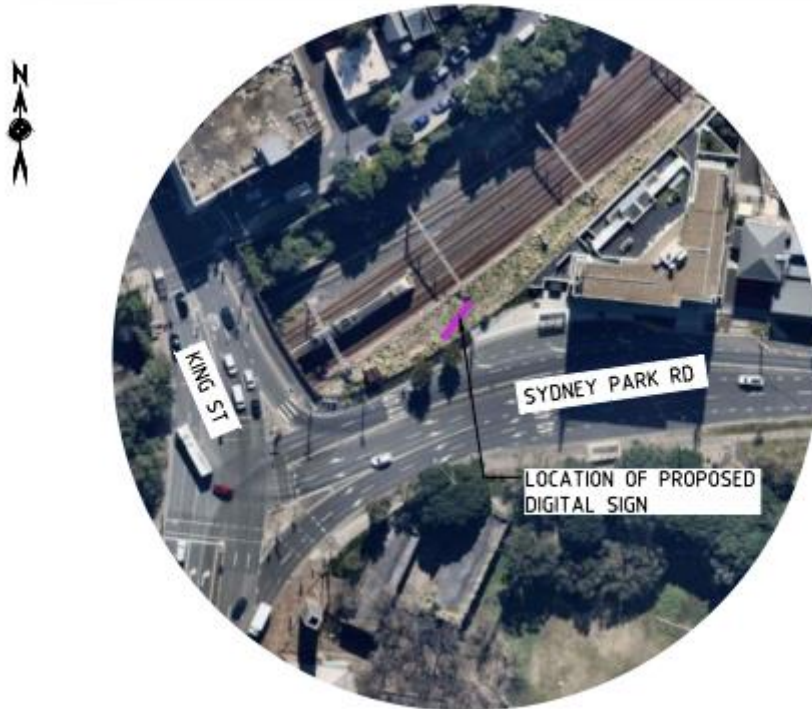
TABLE OF CONTENTS

1	INTRODUCTION	3
1.1	Location.....	3
2	SITE WORK METHODOLOGY	6
2.1	Site preparation	6
2.2	Site Works	6
2.2.1	Civil Investigation.....	6
2.2.2	Civil works.....	6
2.2.3	Install structural steel	7
2.2.4	Install digital box	7
2.3	Sign clean up.....	8
2.4	Final sign off	8
3	MAJOR PLANT AND EQUIPMENT	9
3.1	List of Equipment.....	9

1 INTRODUCTION

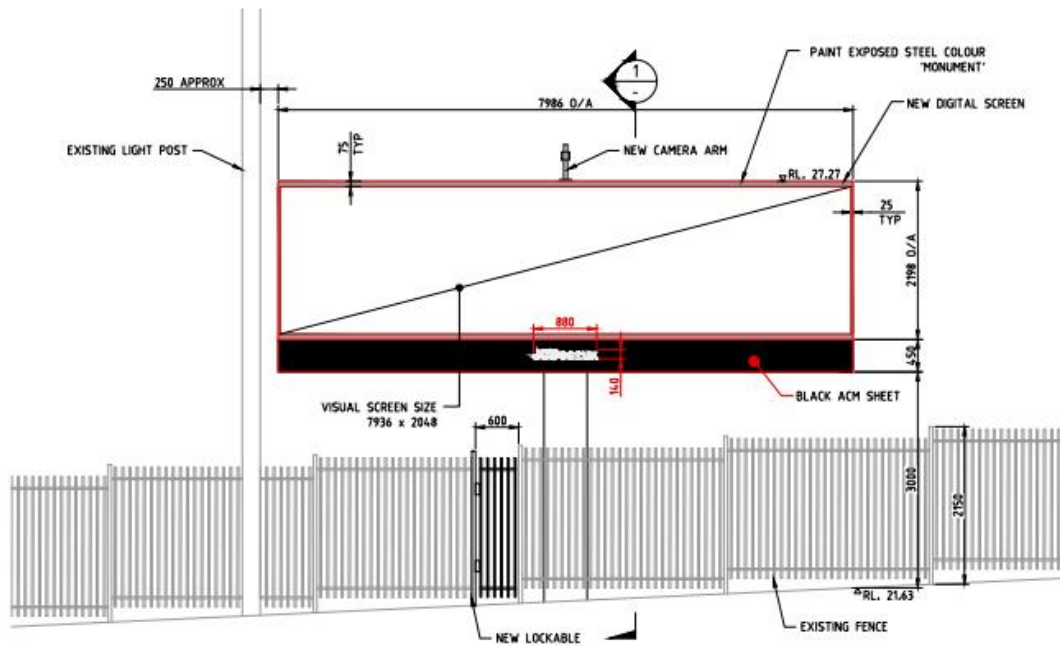
JCDecaux is in the process of approval to build and install Digital Super8 on Sydney Park Road inside the rail corridor Erskineville NSW. Hanlon Industries will perform the construction, supply, and install of the sign and commissioning works once approved.

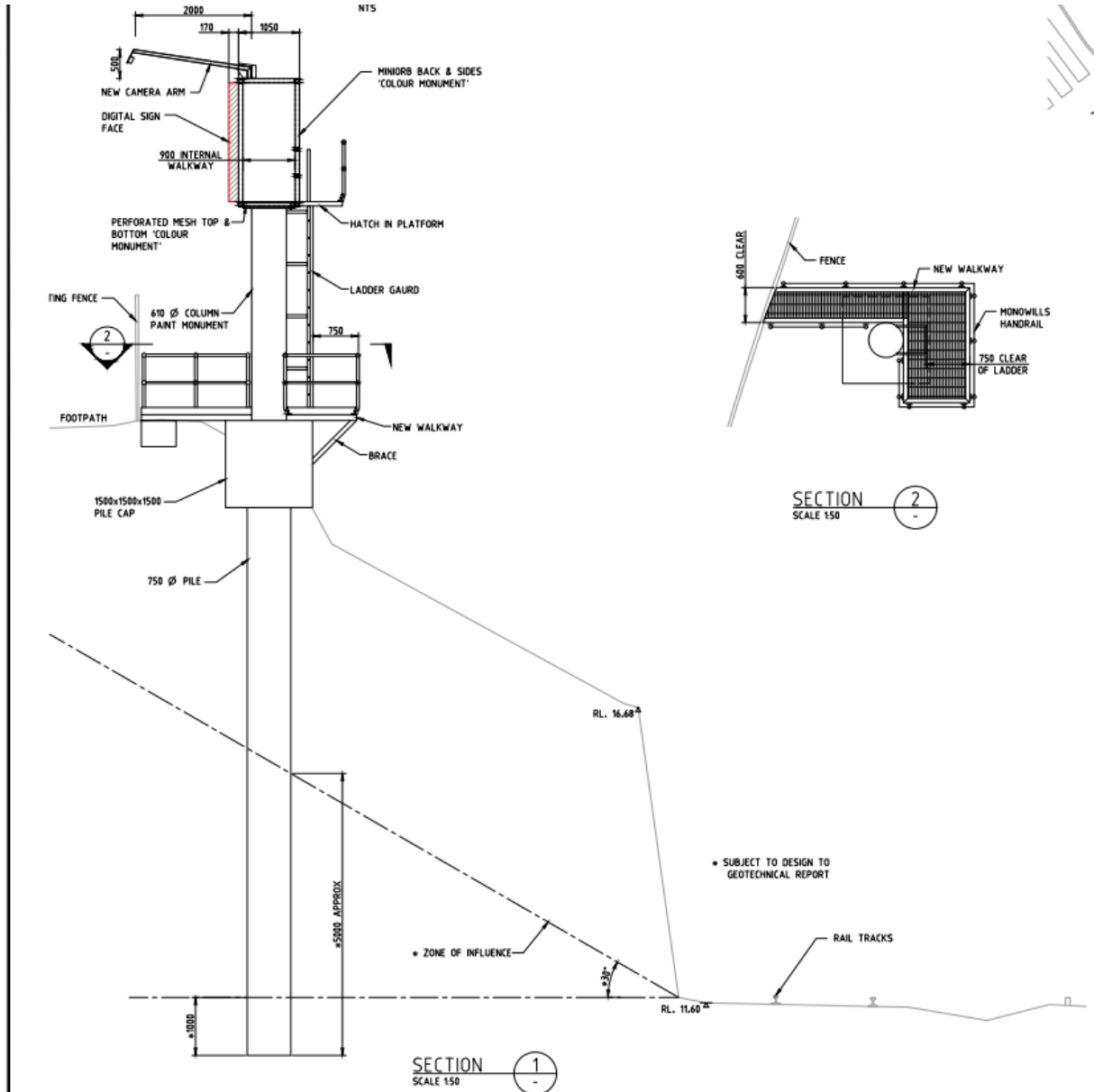
1.1 Location



AERIAL PHOTO

Aerial View of Proposed Sign Location





Sign Design Overview

2 SITE WORK METHODOLOGY

This work involves installation of new Digital sign on Sydney Park Road Erskineville, NSW inside the rail corridor.

Works will be conducted from the road with occasional access to rail corridor.

All works will happen during nighttime, no possession required.

Protection Officer to assist the crew each shift.

2.1 Site preparation

To be conducted before each shift.

- Acquire all permits
- Conduct site pre-start safety meeting & checks
- Sign into rail site in presence of Protection Officer
- Sign onto Hanlon's SWMS
- Traffic management – closure of any road lanes as per TCP
- Accept crane, access equipment & trucks into work zone
- Position crane as per lift study and set up

2.2 Site Works

2.2.1 Civil Investigation

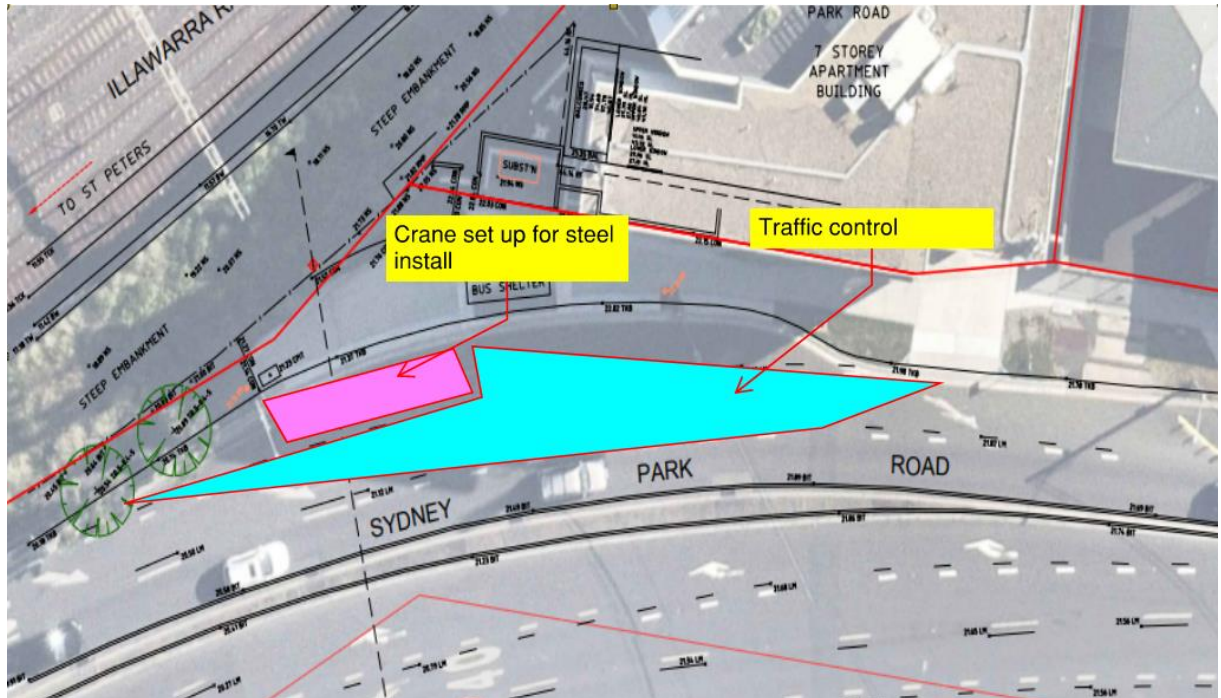
- Ensure all services (DBYD) and Geo-technical investigation are undertaken prior to commencement of works and all associated engineer works consider the geotechnical reports.
- Ensure that site is survey mapped and utility mapped.
- Ensure all rail infrastructure is protected prior to commencement of civil works (signal trays etc)

2.2.2 Civil works

- Civil works to be undertaken during possession
- Protection officers to be used to access tracks
- Signal trays to be covered with protection
- Hi rail equipment to enter at correct nearest entry location. Hi rail drill rig, hydrema
- Hi rail drill equipment to be set up on track at site location
- Surveyor to set out location
- Hi Rail drill rig to drill pile
- Hydrema to deliver the spoil soil away from site
- Geo tech to be onsite at all times during drilling
- Reo cage to be installed drilled pile once engineer approves
- Concrete to be poured and allowed to cure to the correct strength nominated by engineer
- Pile cap to be formed and cast in bolts installed then poured once signed off by engineer.
- Pile cap to cure to required strength
- Stripping to take place

2.2.3 Install structural steel

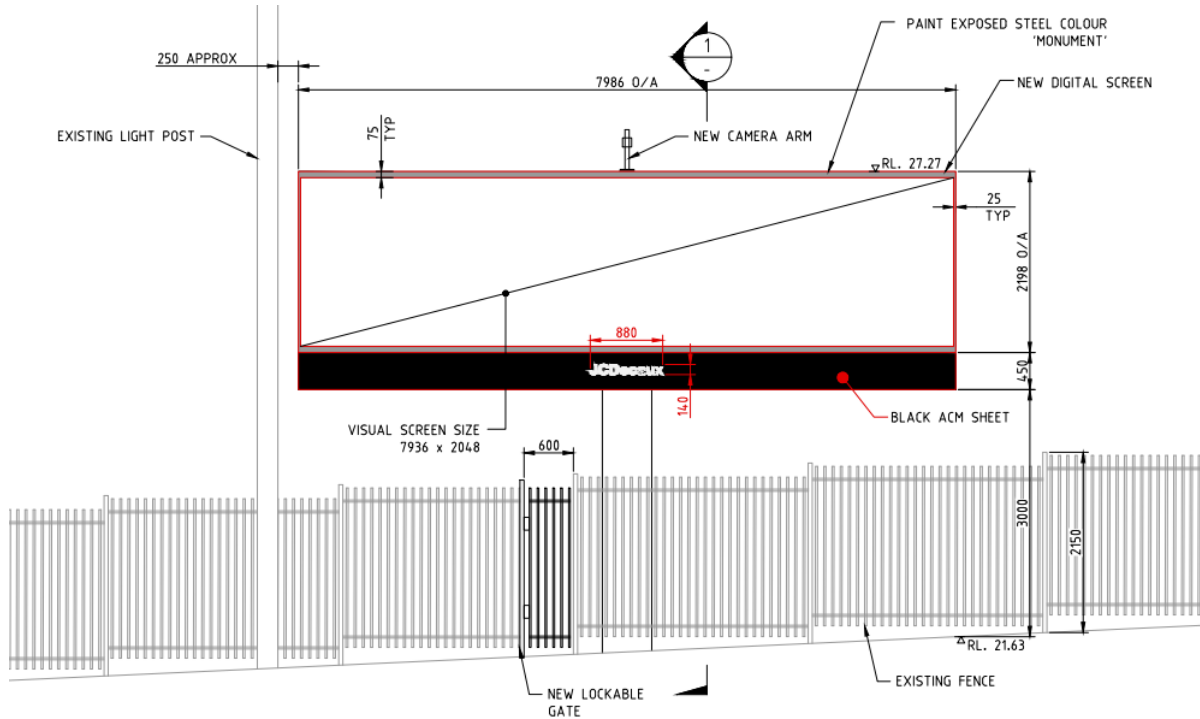
- Monopole pole to be installed
- Perimeter fence requires modification to allow the install of the walkway steel that accesses base of pole
- Traffic management to be in place when installing the steel structure from road



- Pick up structural steel members with crane using slings
- Install structural steel members as per engineering drawing

2.2.4 Install digital box

- Traffic control to be set up as noted above
- Using crane and slings, pick up digital box from the semi-truck
- Align the box and place on the rails
- Bolt Z brackets to the rails and angle brackets at the ends of box only, other Z brackets to be tek screwed where physsiclay possible
- Install facia, cladding frame & badge
- Install hatches
- Install camera on top of the sign
- Electrical connection and commission



Digital Box

2.3 Sign clean up

To be conducted after each shift.

- Clean site
- Remove vehicles
- Ensure no equipment and rubbish is left onsite
- Photograph site
- Close Traffic Management
- Close out with client and exit site

2.4 Final sign off

- All final QA checks & certification
- Engineer to sign off work

3 MAJOR PLANT AND EQUIPMENT

3.1 List of Equipment

- Hi rail hydrema
- HI rail drill rig
- 60T Mobile Crane
- Semi-trailer
- Elevated Work Platforms
- Wire and Cloth Slings
- Electric power tools
- Vehicles